

HULLMOS®

ACCELEROMETER INSTALLATION MANUAL

ROUVARI OY

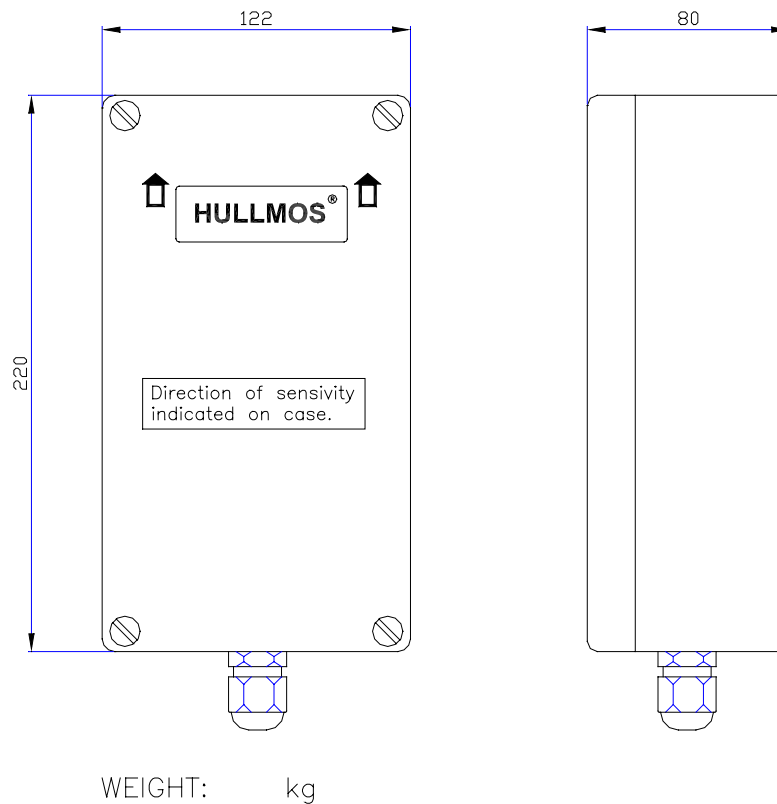
VERSION 1.2

Kulolaakso 6
02340 ESPOO
FINLAND

Tel. +358 50 5615871
E-mail info@hullmos.com
www.hullmos.com

ACCELEROMETER

Case Dimensions



Picture 1. Case Dimensions.

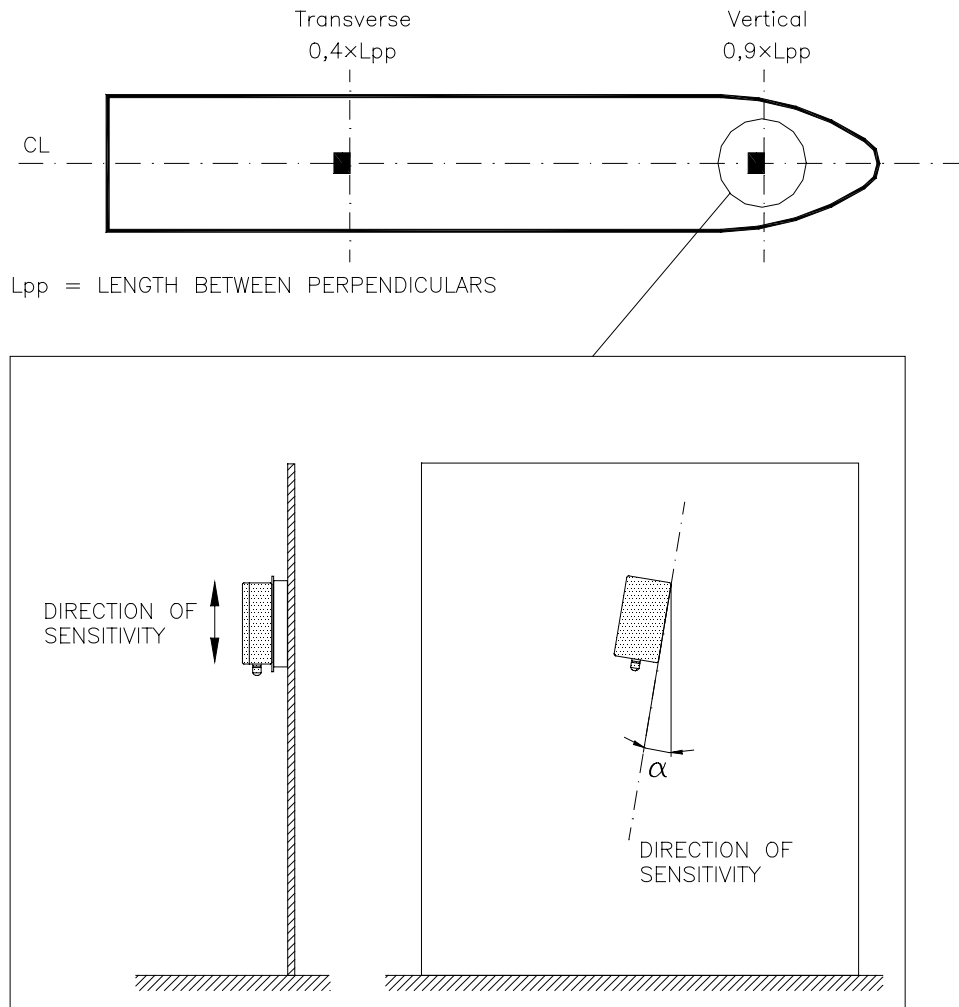
Note!

HANDLE WITH CARE!

THE SENSOR INSIDE IS EXTREMELY SENSITIVE. HITTING OR DROPPING MAY CAUSE DAMAGE. THEREFORE TAKE THE UTMOST CARE TO AVOID SHOCKS.

Mounting Position

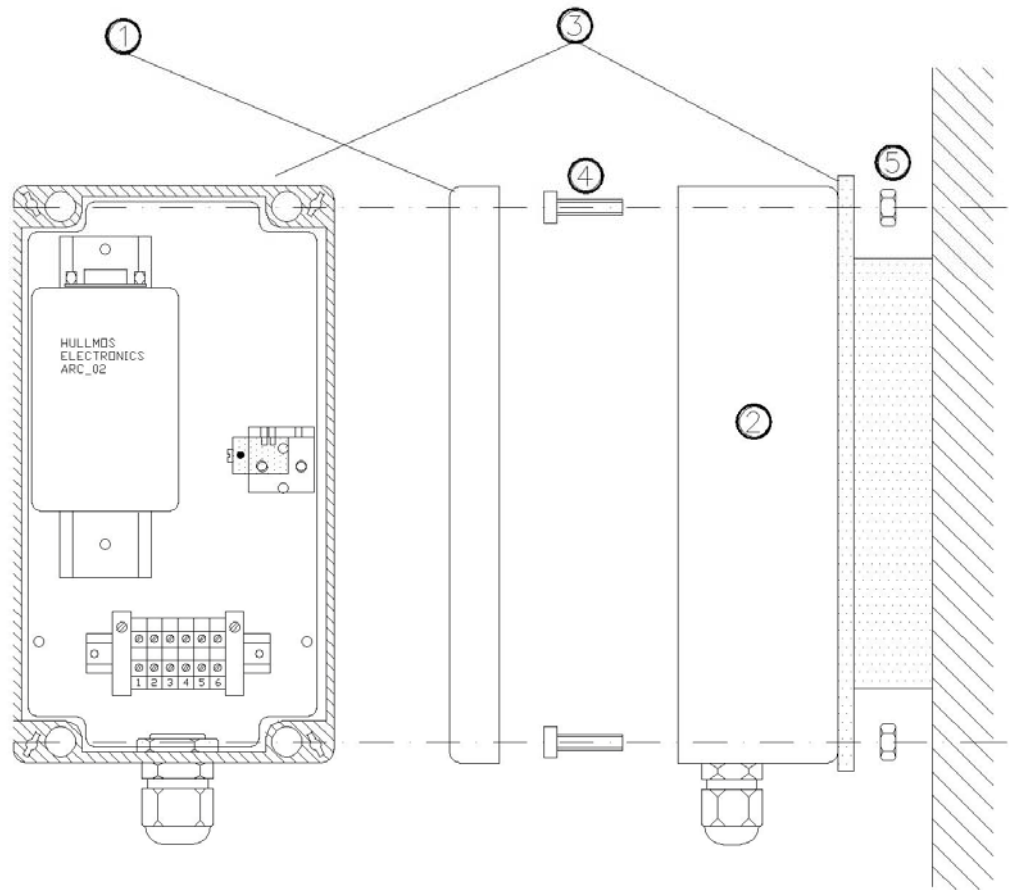
The Accelerometer measures vertical or transverse acceleration. The installation position should be as close to vessel's centerline as practicable. The line of sensitivity of the sensor should be as close to vertical as practicable. Accuracy of the orientation should be better than 5° ($\alpha_{MAX} = 5^\circ$), see picture 2.



Picture 2. Sensor's mounting position.

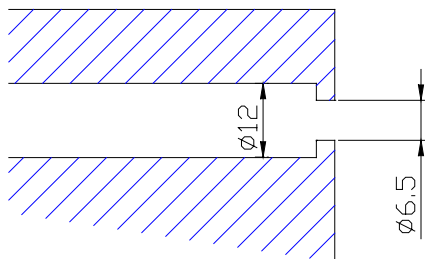
Mounting

The Accelerometer is tightened with bolts on the support stand (not delivered with the sensor).



Picture 3. Mounting of the Accelerometer.

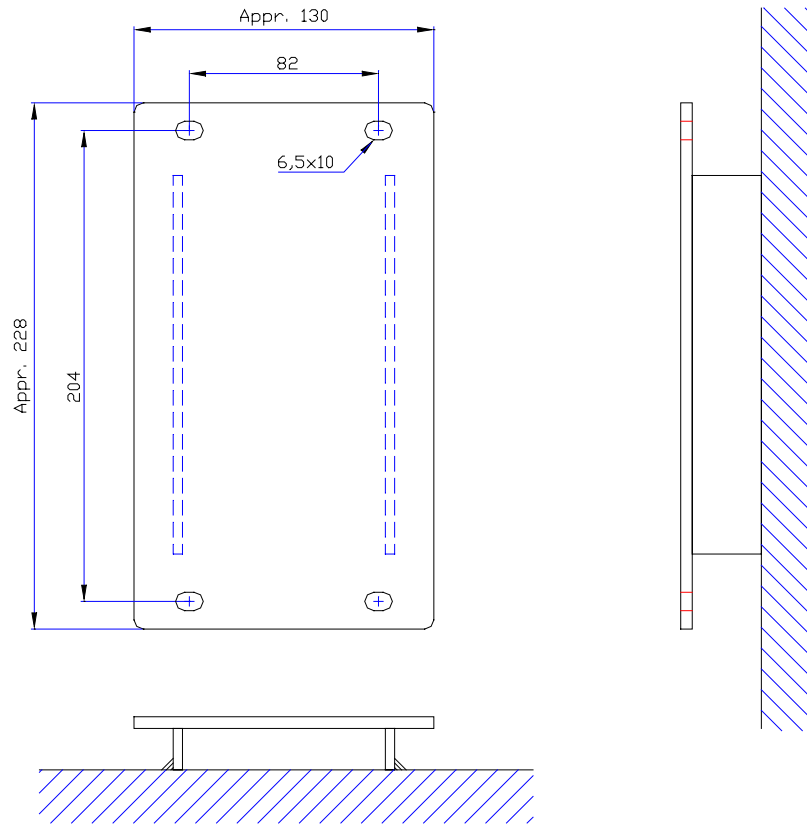
1. Top cover
2. Case cover (with closing screws)
3. Support stand
4. Fixing screws for the sensor (4 pcs).
5. Bolts and lock washers for the fixing screws (4 pcs).



Picture 4. Accelerometer's mounting holes.

Support Stand

Example of the support stand and fixing.



Picture 5. Support Stand's dimensions.